

Pastoralists in Kenya have limited access to land for livestock grazing, which is affecting their livelihood and wellbeing. The ASSAR team in Kenya is working together with local communities, government and other key decision-makers to improve the management of available drylands and, ultimately, achieve more sustainable and equitable access to pasture resources in drylands.



Climate in the drylands becoming increasingly unpredictable

People & communities affected differently by scarcity of pasture



More competition for scarce resources

Increased tension between pastoralists and wildlife



Resilience building and policy support



Multi-stakeholder engagement and influencing



Participatory Scenario Analysis (PSA) workshops



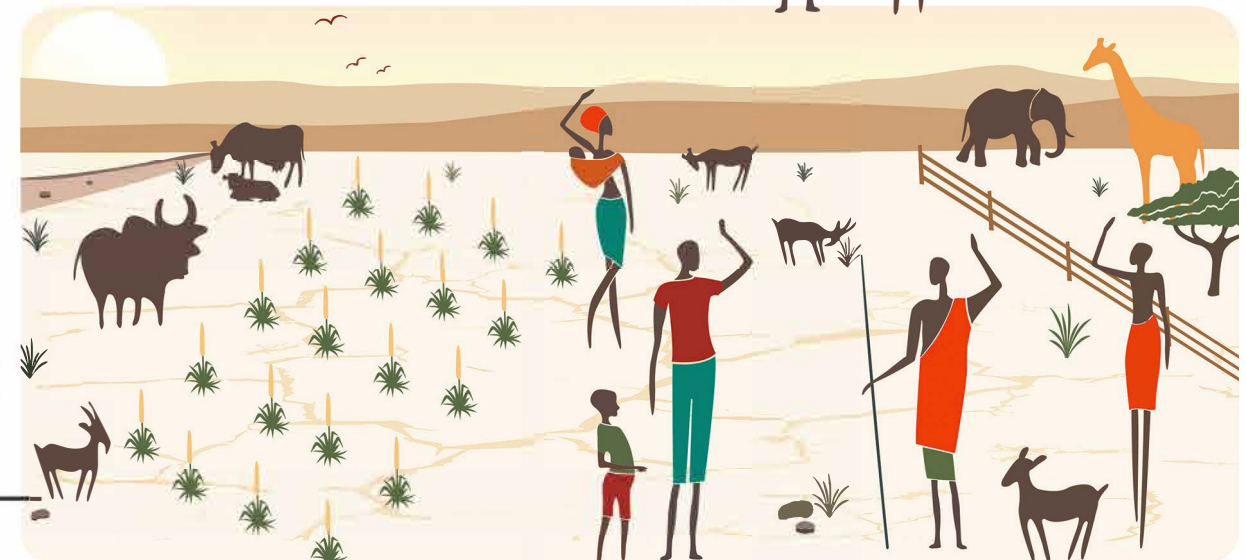
PASTURE MANAGEMENT

Peer-to-peer learning among community members



Livelihood of community improved through sustainable rangeland management

Natural resources more equitably managed



The five-year ASSAR project (Adaptation at Scale in Semi-Arid Regions, 2014-2018) uses insights from multi-scale, interdisciplinary work to inform and transform climate adaptation policy and practice in ways that promote the long-term wellbeing of the most vulnerable and those with the least agency.

For more information, visit www.assar.uct.ac.za