

A quick guide to ASSAR

(Adaptation at Scale in Semi-Arid Regions)

at Adaptation Futures 2018



Tuesday 19 June 2018



Opening plenary

Mark New, University of Cape Town
09h15-11h00, Auditorium 1



[Credibility and Scale as Barriers to Uptake and Use of Seasonal Climate Forecasts in Bobirwa Sub-District, Botswana](#)

Janet Selato, University of Cape Town, Session 317, 09h15-11h00, Room 2.64



What do the intersection between resilience and wellbeing offer development practice?

Irene Kunamwene, University of Cape Town, Session 55, 11h30 – 13h15, Room 2.61



[Conversations between diverse knowledge and belief systems to reduce vulnerability to climate change in Bobirwa](#)

Dian Spear, University of Cape Town, Session 317, 11h30 - 13h15, room 2.64



[Responses to dynamics in ecosystem service provision in semi-arid Bobirwa sub-district, Limpopo Basin part of Botswana](#)

Ephias Mugari, University of Botswana, Session 352, 11h30 -13h15, room 2.66



Vertical integration in adaptation: understanding institutional barriers and enablers across scales

Gina Ziervogel, University of Cape Town, Session 116A, 14h15-16h00, and 116B, 16h30-18h15, Room 1.63



[Decentralised governance and climate change adaptation: Exploring differential impacts and expectations at the sub-national and local levels in East Africa](#)

Poshendra Satyal, University of East Anglia, Session 320, 14h15– 16h00, Room 2.66



[Interacting dynamics of adaptation and development: water stress and climate extremes in semi-arid East Africa](#)

Roger Few, ASSAR, University of East Anglia, Session 330, 14h15-16h00, Room 2.45



[Migration & Displacement in Climate Hotspots: Adaptation or Loss and Damage?](#)

Mark Tebboth, University of East Anglia, Session 11, 14h15 -16h00 , Room 1.62



[Capacity of local level actors to participate in water governance: Insights from north-central Namibia](#)

Salma Hegga, University of Cape Town, Session 116B, 16h30-18h15, Room 1.63



[Vertical integration in adaptation: understanding institutional barriers and enablers across scales](#)

Edmond Totin, International Crops Research Institute for the Semi-Arid Tropics
Session 116B, 16h30-18h15, Room 1.63



[Using and evaluating participatory scenario tools for adaptation](#)

Teresa Perez, University of Cape Town, Session 124, 16h30-18h15, Room 2.41



[Using and evaluating participatory scenario tools for adaptation](#)

Edmond Totin, International Crops Research Institute for the Semi-Arid Tropics
Session 124, 16h30-18h15, Room 2.41



[Household dynamics and gender relations in managing risk and adapting to change in semi-arid Africa and Asia](#)

Nitya Rao, University of East Anglia, Session 303, 16h30-18h15, Room 2.45



[Saying what we mean: transformation, radical change and/or social justice](#)

Roger Few, University of East Anglia, Session 68, 11h30-13h15, Room 1.43



Gender and resilience

Daniel Morchain, Oxfam GB, Session 303, 16h30-18h15, Room 2.45

Wednesday 20 June 2018



[Mobility and changing livelihood trajectories: implications for vulnerability and adaptation in semi-arid regions](#)

Mark Tebboth, University of East Anglia, Session 340, 09h15 - 11h00, Room 2.65



[Climate change knowledge and research](#)

Daniel Morchain, Oxfam GB, Session 354, 09h15 - 11h00, Room 2.66



[Designing and implementing complex consortium-based projects](#)

Lucia Scodanibbio, University Of Cape Town, Session 311, 09h15-11h00, Room 2.44



[What enables adaptation of women in climate hotspots?](#)

Nitya Rao, University of East Anglia
Session 64, 09h15-11h00, Room 1.63



[It's not just about data – Demand driven climate services for better adaptation decision-making](#)

Ramkumar Bendapude, Watershed Organisation Trust, Session 132, 09h15-11h00



Models of enabling environments for researcher-practitioner collaboration: successes and failure

Jesse DeMaria-Kinney, Oxfam GB, Session 139, 14h15-16h00, Room 2.61



Models of enabling environments for researcher-practitioner collaboration: successes and failure

Prathigna Poonacha, Indian Institute for Human Settlements
Session 139, 14h15-16h00, Room 2.61



Evidence-based guiding principles for developing adaptation pathways in the context of development

Maitreyi Koduganti, Indian Institute for Human Settlements
Session 200, 14h15-16h00, Room 2.41



It's not just about data – Demand-driven climate services for better adaptation decision-making

Chandni Singh, Indian Institute for Human Settlements
Session 132, 09h15-11h00, Room 2.46



Evidence-based guiding principles for developing adaptation pathways in the context of development

Edmond Totin, International Crops Research Institute for the Semi-Arid Tropics
Session 200, 14h15-16h00, Room 2.41



What would transformative adaptations in agriculture look like, really?

Daniel Morchain, Oxfam GB, Session 191, 14h15 - 16h00, Room 1.41



Research for Impact. Dynamic approaches, experiences and lessons on research uptake

Jesse DeMaria-Kinney, Oxfam GB, Session 195, 16h30-18h15, Room 1.42

Thursday 21 June 2018



Unlikely Bedfellows: How academia, business, government and civil society can work better together for adaptation

Daniel Morchain, Oxfam GB, Session 143, 09h15-11h00, Room 2.46



New leaders in a changing climate: the role of leadership in facilitating transformations

Helen Jeans, Oxfam GB, Session 171, 9h15-11h00, Room 2.62



People who once had 40 cattle are left only with fences': Coping with Persistent Drought in Awash, Ethiopia

Tilahun Tefera, University of Addis Ababa, Session 327, 09h15-11h00, Room 2.66



Using qualitative scenarios as a tool to identify climate-compatible adaptation interventions for marginalised communities

Mark Tebboth, University of East Anglia, Session 25, 11h30 - 13h15, Room 2.61



Gender, culture and livelihood outcomes

Margaret Angula, University of Namibia, Session 342, 14h15-16h00, Room, 2.66



[So your research has no impact...? Participatory theatre can get you there \(and have fun while you're at it\)](#)

Daniel Morchain, Oxfam GB, Session 17, 14h15- 16h00, Room 2.62



[Circular Migration and Localized Urbanization in Rural Semi-arid India: Diverse Stakeholders, Multiple Strategies](#)

Soundarya Iyer, Indian Institute for Human Settlements, Session 61, 14h15 to 16h00, Room 1.44



Closing plenary

Mark New, University of Cape Town, 16h30-18h15, Auditorium 1



Closing plenary

Aromar Revi, Indian Institute for Human Settlements, 16h30-18h15, Auditorium 1

Friday 22 June 2018: Masterclasses

Venue: SANBI Centre for Biodiversity Conservation, Kirstenbosch



**How can life course approaches strengthen migration and adaptation research?
Methodological reflections from collaborative research across Africa and India**

Chandni Singh, Indian Institute for Human Settlements

10h00-12h00, Room 2 (Download: [Conducting Life History Interviews: A How-To Guide](#))



**How can life course approaches strengthen migration and adaptation research?
Methodological reflections from collaborative research across Africa and India**

Mark Tebboth, University of East Anglia

10h00-12h00, Room 2



Urban adaptation governance

Gina Ziervogel, University of Cape Town

14h00-16h00, Room 5

POSTERS: Tuesday 19 June 2018

13h15-14h15 and 16h00-16h30, Level 1, Auditorium 1 foyer



[An assessment of determinants of adaptive capacity of livestock farmers to climate change in Omusati Region, North Central Namibia](#)

Cecil Togarepi, University Of Namibia, Poster 7



[Knowledge \(traditional/ local/ indigenous\) systems and the role of knowledge brokers in contributing towards adaptation](#)

Greeshma Hegde, Indian Institute for Human Settlements, Poster 12



[Mapping out Actor's Power and Influence in Climate Change Adaptation Policies: Opportunities to Strengthen Adaptation Process in North Central Namibia](#)

Salma Hegga, University of Cape Town, Poster 24



[Understanding the vulnerabilities and resilience of the local communities to climatic and non-climatic risks](#)

Anuradha Phadtare, WOTR Centre for Resilience Studies, Poster 32



[Opportunity for governance systems to plan for adaptation action through barriers and enablers in Botswana?](#)

Chandapiwa Molefe, University Botswana, Poster 33



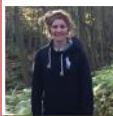
[Comparative analysis of vulnerability in three Southern African countries: entry points to transformation](#)

Daniel Morchain, Oxfam GB, Poster 36



[Barriers to Climate Change Adaptation in Namibia](#)

Julia Davies, University of Cape Town, Poster 40



[Barriers and enablers to the adoption of practices to improve crop production in the semi-arid Omusati Region, Namibia](#)

Angela Chappel, University of Cape Town, Poster 66



[Implications of Invasive species for climate change and food security of pastoralism economy in the Middle Awash Valley \(MAV\), Ethiopia](#)

Mohammed Assen, Addis Ababa University, Poster 80



[Changing culture, changing climate: how is the adaptive capacity shaped by the intersections of gender and ethnicity in a semi-arid rural setting, Namibia?](#)

Margaret Angula, University of Namibia, Poster 114



[Extreme events and associated risk over Godavari Basin: implications on vulnerabilities](#)

Ramkumar Bendapudi, Watershed Organisation Trust, Poster 125

POSTERS: Wednesday 20 June 2018

13h15-14h15 and 16h00-16h30, Level 1, Auditorium 1 foyer



[Impacts of change in land use on ecosystem services for adaptation in forested landscapes in Semi-Arid India](#)

Divya Solomon, Ashoka Trust for Research in Ecology and the Environment, Poster 47



[Monitoring vegetation dynamics and ecosystem service provision in semi-arid Bobirwa sub-district of Botswana using MODISNDVI time series data from 2000-2015](#)

Ephias Mugari, University of Botswana, Poster 48



[Integrating Climate Science and Participatory Vulnerability Assessments to Reorient Watershed Planning Process : A Methodological Experience](#)

Bhavana Rao, Watershed Organisation Trust, Poster 57



[Adaptation or Maladaptation: Case of farm ponds converted into storage tanks in Maharashtra - Implications for groundwater governance](#)

Renie Thomas, Watershed Organisation Trust, Poster 63



[Adaptation as Innovation: Exploring practices of 'progressive farmers' as opportunities of in individual adaptation in India](#)

Greeshma Hegde, Indian Institute for Human Settlements, Poster 76

POSTERS: Thursday 21 June 2018

13h15-14h15 and 16h00-16h30, Level 1, Auditorium 1 foyer



[Gendered Practices and Climate resilient Agricultural Technologies](#)

Natasha S.K., Indian Institute For Human Settlements, Poster 82



[Considering religion and tradition in climate smart agriculture: Insights from Namibia](#)

Julia Davies, University of Cape Town, Poster 11



[Wellbeing as a methodology in identifying differential vulnerability in a community: A Study in the semi-arids of Maharashtra](#)

Bidisha Sinha, Watershed Organisation Trust, Poster 102



[Formal and informal institutions in climate change adaptation: the case of Lawra and Nandom districts in Ghana](#)

Rabiatu Abass, University Of Ghana, Poster 124

Where to find us

Visit us at the IDRC/CARIAA stand (no. 5 & 6) in the Expo Hall.
You can also check our website for more information by visiting www.assar.uct.ac.za or scanning the QR code.



Adaptation at Scale in Semi-Arid Regions (ASSAR) is a five-year research project (2014-2018) across seven countries in India, East Africa, West Africa and Southern Africa that uses insights from multi-scale, interdisciplinary work to inform and transform climate adaptation policy and practice in ways that promote the long-term wellbeing of the most vulnerable and those with the least agency.



CARIAA
Collaborative Adaptation Research
Initiative in Africa and Asia



IDRC | CRDI
International Development Research Centre
Centre de recherches pour le développement international

Canada

ASSAR is one of four hot-spot research projects in the Collaborative Adaptation Research Initiative in Africa and Asia (CARIAA) programme, funded by Canada's International Development Research Centre (IDRC) and the United Kingdom's Department for International Development (DFID).

(Credits: Front page photo by Prathigna Poonacha. Back page photo by Sophie Lashford)